

BOCA GARDENS PLAT FOUR

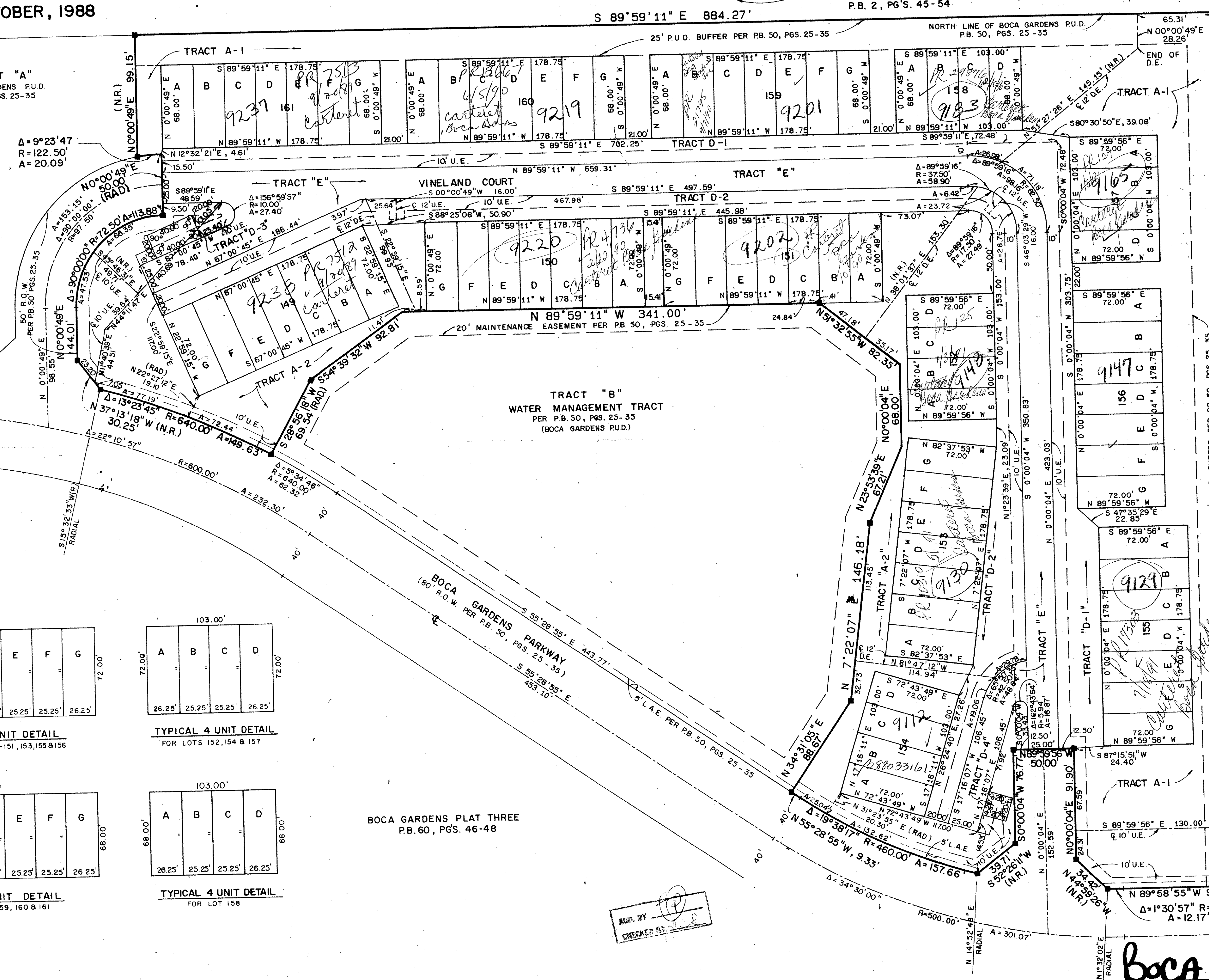
BEING A REPLAT OF A PORTION OF THE PLAT OF BOCA GARDENS (A P.U.D.), AS RECORDED IN PLAT BOOK 50, PAGES 25 THROUGH 35, INCLUSIVE, PUBLIC RECORDS OF PALM BEACH COUNTY, FLORIDA, LYING IN SECTION 6, TOWNSHIP 47 SOUTH, RANGE 42 EAST, PALM BEACH COUNTY, FLORIDA. OCTOBER, 1988

THE PALM BEACH FARMS PLAT NO. 3
P.B. 2, PG'S. 45-54

SHEET 2 OF 2

P.O.B.

TRACT "A"
BOCA GARDENS P.U.D.
P.B. 50, PGS. 25-35



MOST NORTHERLY N.E. COR. OF BOCA GARDENS P.U.D. P.B. 50, PGS. 25-35

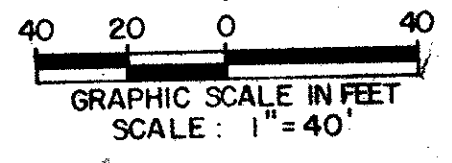
$\Delta = 9^{\circ}23'47''$
 $R = 122.50'$
 $A = 20.09'$

$\Delta = 156^{\circ}59'57''$
 $R = 10.00'$
 $A = 27.40'$

$\Delta = 89^{\circ}59'16''$
 $R = 37.50'$
 $A = 58.90'$

$\Delta = 13^{\circ}23'45''$
 $R = 640.00'$
 $A = 149.63'$

TRACT "B"
WATER MANAGEMENT TRACT
PER P.B. 50, PGS. 25-35
(BOCA GARDENS P.U.D.)

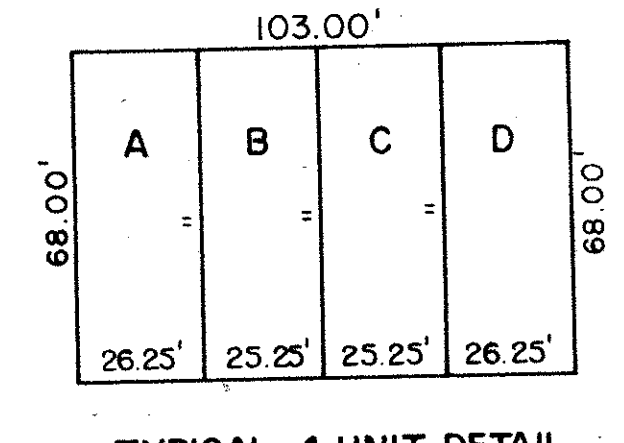
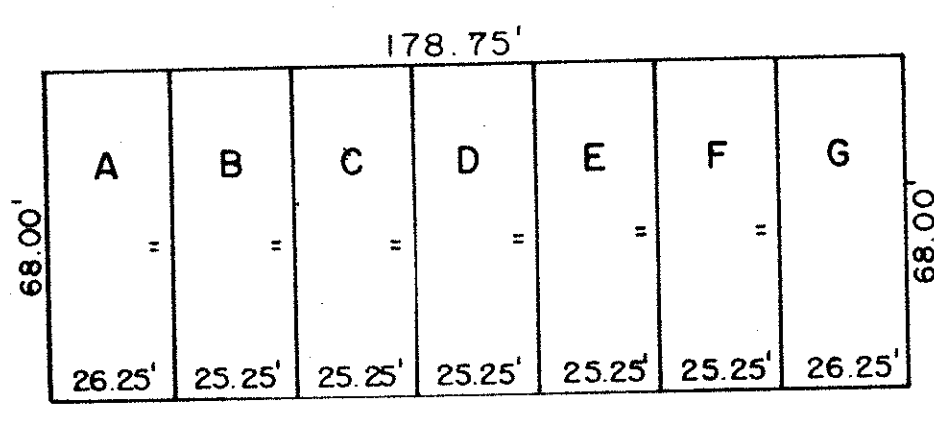
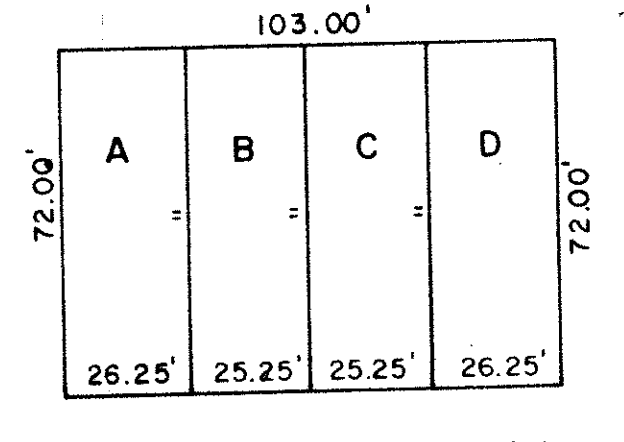
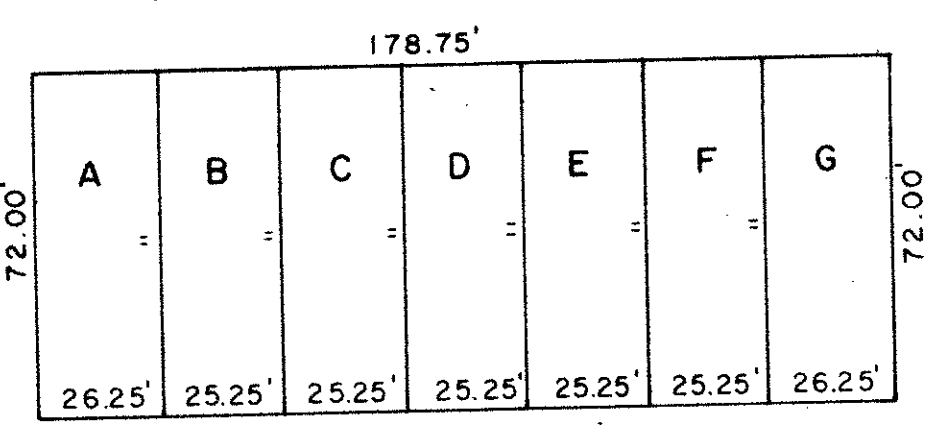


PROJ. NO. 485-2700
DATE: OCT. 1988
SHEET NO. 2 OF 2

BOCA GARDENS
PLAT FOUR

METRIC ENGINEERING, INC.
ENGINEERS - PLANNERS - SURVEYORS
MIAMI - FORT LAUDERDALE
WEST PALM BEACH - PANAMA CITY

62
B
53
Boca Gardens #4
215A
RS 84-42
33434
6/17/92



BOCA GARDENS PLAT THREE
P.B. 60, PG'S. 46-48

0407-004

40' P.U.D. BUFFER
BOCA GARDENS P.U.D.
P.B. 50, PGS. 25-35

5' L.A.E. PER PB 50, PGS. 25-35

$\Delta = 1^{\circ}30'57''$
 $R = 460.00'$
 $A = 12.17'$

ADD. BY
CHECKED BY

62/91
BOCA GARDENS PLAT 4